



Department of Public Services  
1015 South Lincoln Avenue • Three Rivers, Michigan 49093  
269.273.1845 • [www.threeriversmi.org](http://www.threeriversmi.org)  
Fax: 269.273.1042

---

REQUEST FOR BID  
SANITARY AND STORM SEWER TELEVISIONING AND CLEANING – FY 15  
CITY OF THREE RIVERS  
ST JOSEPH COUNTY, MICHIGAN

The City of Three Rivers is requesting sealed bids for sanitary and storm sewer televising and cleaning services in conjunction with the City's FY 2015 sanitary sewer inspection and cleaning program. Attached to the request for bid are maps showing each section to be televised, or televised and cleaned. The City maintains a City-wide numbering system, and the numbering is to be utilized for the televising and cleaning work.

Please note: if you downloaded this bid document from the City's website or another source, please fax your contact information to 269-273-1042 to ensure you are on the bidders list so you can receive any addenda that may be sent out.

### **Scope of Sanitary Sewer Inspection and Cleaning Program**

#### ***Sanitary Sewer Base Bid***

East Street (North end to Hoffman) – 1,277' - 8" - VCP, Televis, clean, televise. This footage will be used to inspect the condition of the main located under the roadway.

8<sup>th</sup> Street (Broadway to Canal) – 1,830' - 8" - VCP, Televis, clean, televise. This footage will be used to confirm that the main is still in good condition. Cleaning is necessary due to an excess of grease build-up in the main.

River Area (Whitehouse building to 4<sup>th</sup> St pump station) – 410' - 6" – VCP, 38' – 15" – VCP, 105' – 8" – VCP, 2,687' – 12" - VCP, Televis, clean, televise. This footage will be used to inspect the condition of the main that is located in or near the St. Joseph River.

S Lincoln Ave (Millard to Broadway, minus King to Buck) – 2,097' - 8" - VCP, Televis, clean, televise. This footage will be used to locate sanitary sewer laterals and identify if the pipe needs full replacement or spot repairs for a future roadway project.

***Sanitary Sewer Bid Alternative*** (Due to budget constraints, this portion may or may not be included in the project.)

Spring St (King to Swartz) – 1,451' - 8" - VCP Televis, clean, televise. This footage will be used to locate sanitary sewer laterals and identify if the pipe needs full replacement or spot repairs for a future roadway project.



Department of Public Services  
1015 South Lincoln Avenue • Three Rivers, Michigan 49093  
269.273.1845 • [www.threeriversmi.org](http://www.threeriversmi.org)  
Fax: 269.273.1042

---

S Douglas (Millard to Broadway) – 2,488' - 8" - VCP, Televis, clean, televis. This footage will be used to locate sanitary sewer laterals and identify if the pipe needs full replacement or spot repairs for a future roadway project.

### *Storm Sewer Bid*

Scouter Park (Middle Street to St Joseph River) – 709', - 12" - VCP, Televis, clean, televis. Sink holes have resulted along this section of storm sewer. Televising will show the pipe condition and locations of pipe failure so they can be repaired.

S Douglas Ave (~100' S of Millard) – 251', - 10" - Concrete, Clean and televis. Two storm sewer basins are backing up, not allowing storm drainage. Those two basins located ~100' south of the intersection of Millard and Douglas, along with the storm sewer main running from those structures to the manhole located south approximately 210 feet.

Wheeler St (West to Maple) – 301', - 12" - VCP, Clean and televis. West Street was repaved in 2012 and minor storm repairs were completed at that time. There is a pair of storm basins that are no longer draining during a heavy rain. Line needs to be cleaned and televised/traced from the basin in the southwest corner of West Street at Wheeler to the basin at the southeast corner of Maple Street and Wheeler, or the end of the storm sewer line.

### **Anticipated Project Schedule**

**December 1, 2014** – Deliverables due for all sanitary and storm sewers identified in the bid, including the bid alternative if awarded.

### **Bidding Notes**

Contractor is responsible for providing written notice a minimum of 48 hours prior to beginning any televising or cleaning activities. Notice shall be provided to all buildings connected to a sanitary sewer

Traffic maintenance and signage is the responsibility of the contractor.

Materials removed from the sanitary sewer will need to be disposed of at a location other than the City's wastewater treatment plant (WWTP), as we do not have a good way to process a large amount of material in this manner.

Certificate of liability insurance, and completed W-9 will be required prior to issuing a Purchase Order for this project.



Department of Public Services  
1015 South Lincoln Avenue • Three Rivers, Michigan 49093  
269.273.1845 • [www.threeriversmi.org](http://www.threeriversmi.org)  
Fax: 269.273.1042

---

The City has a “Local Preference Policy” with regard to bidding. Local is defined as “within the City Limits”. A copy of the policy is available upon request.

### **Deliverables**

Notebook containing printed copies of the following:

- Summary sheet of manholes. Each summary sheet should contain only one street.
- Tabular and graphic reports of each section of sanitary sewer.

DVD(s) containing the following:

- Pre-cleaning and post-cleaning footage of the pipe sections.
- Digital copies of the printed items in .pdf format.

### **Submittal of Bids**

Proposals should be submitted to the City of Three Rivers, City Clerk; 333 W Michigan Avenue; Three Rivers, MI 49093 by **11:00 am on Tuesday September 9, 2014**. It is anticipated that the contract for sanitary sewer televising and cleaning will be presented to the City Commission on **Tuesday, September 16, 2014**.

## Bid Form

The undersigned having familiarized (himself/themselves) with the local conditions affecting the cost of the work and the Contract Documents, and hereby proposes to perform everything required to be performed and to provide and furnish all labor, materials, necessary tools, equipment, utility and transportation services necessary to perform and complete in a workmanlike manner all work required for sewer televising and cleaning in accordance with the specifications as prepared by the Department of Public Services, City of Three Rivers, Michigan, for, including Addenda No. \_\_\_\_ issued thereto, the following unit prices:

COMPANY \_\_\_\_\_

ADDRESS \_\_\_\_\_

CITY \_\_\_\_\_ STATE \_\_\_\_\_ ZIP CODE \_\_\_\_\_

SIGNATURE \_\_\_\_\_ TITLE \_\_\_\_\_

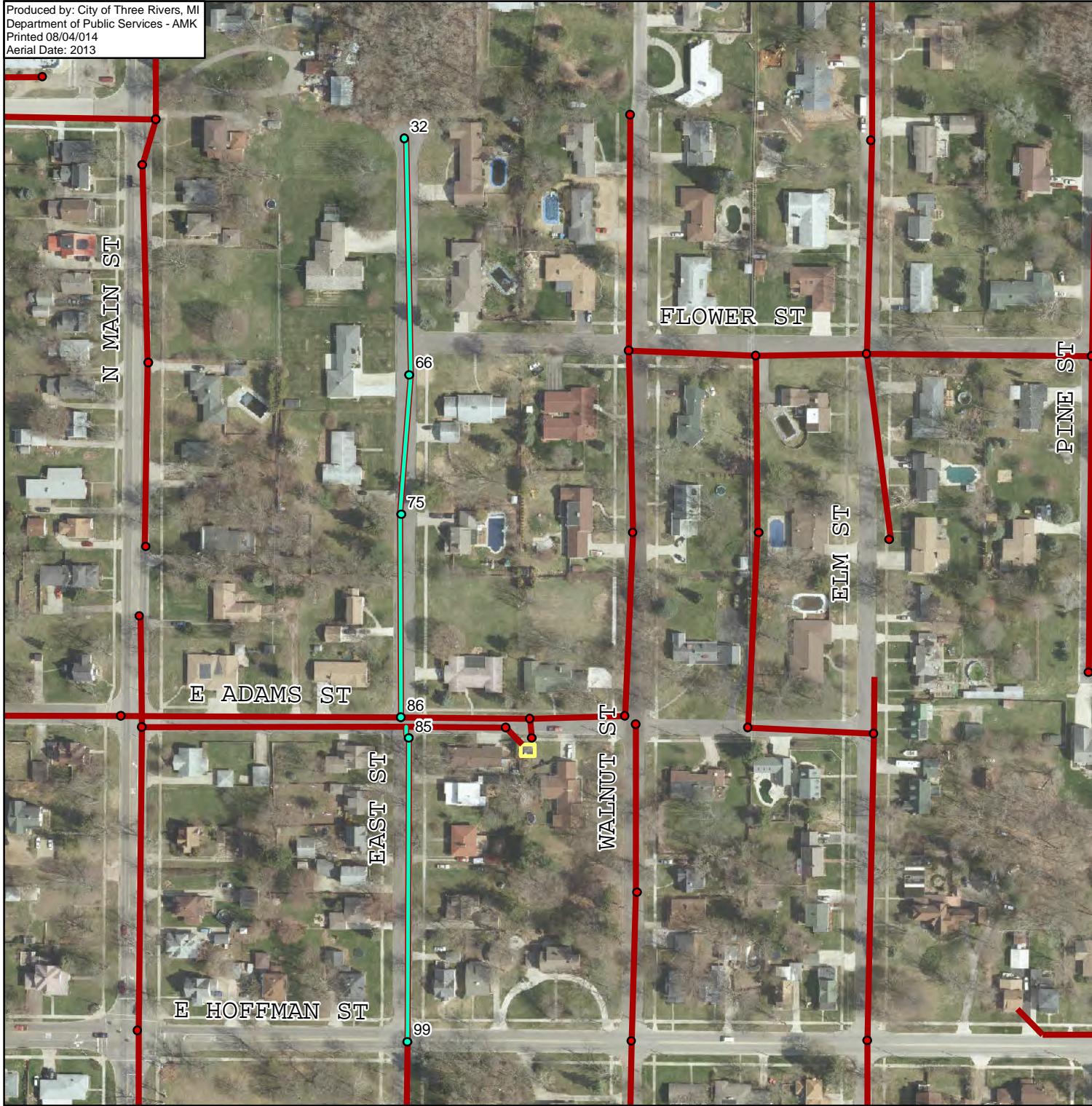
TELEPHONE \_\_\_\_\_ DATE \_\_\_\_\_

## Sanitary and Storm Sewer Cleaning and Televising

Item No.	Item Description	Quantity	Unit	Unit Price	Total Price
<b>Sanitary Base Bid</b>					
1	East Street (North End to Hoffman)	1	LS		
2	8th St (Broadway to Canal)	1	LS		
3	River Area (Whitehouse building to 4th St pump station)	1	LS		
4	S Lincoln Ave (Millard to Broadway, minus King to Buck)	1	LS		
Total Sanitary Base Bid					
<b>Sanitary Bid Alternative</b>					
5	Spring St (King to Swartz)	1	LS		
6	S Douglas (Millard to Broadway)	1	LS		
Total Sanitary Bid Alternative					
<b>Storm Bid Alternative</b>					
7	Scouter Park (Middle St to St Joe River)	1	LS		
8	S Douglas Ave (south of Millard)	1	LS		
9	Wheeler St (West to Maple)	1	LS		
Total Storm Bid Alternative					
<b>Bid Total</b>					

**Project Maps**

Produced by: City of Three Rivers, MI  
 Department of Public Services - AMK  
 Printed 08/04/014  
 Aerial Date: 2013

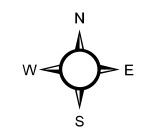


## Sewer Cleaning

**East Street  
 North of Hoffman  
 Televis, Clean, Televis.**

### Legend

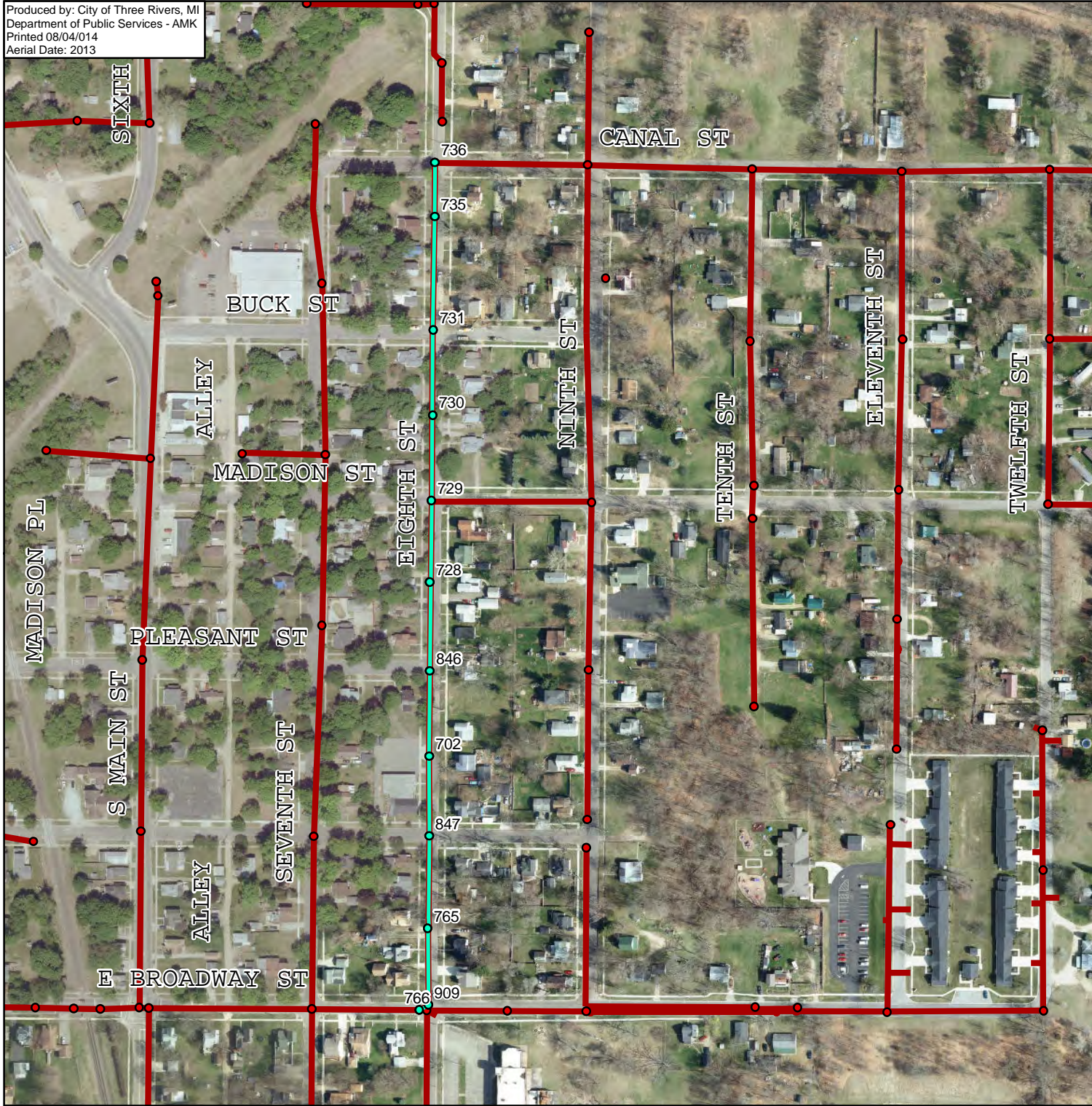
- Televised Sanitary MH
- Televised Sanitary Lines
- Sanitary MH
- Sanitary Lines
- Water Pump Station



1 inch = 200 feet

This map is provided by the City of Three Rivers (the "City"). The person or entity receiving this map (the "User") agrees: (1) that there are no warranties of any kind; (2) that use of this map is at the Users sole risk; (3) that the City shall not be liable for any damages to User or any third party; and (4) this map may not be used by any third party without the specific written consent of the City.

Produced by: City of Three Rivers, MI  
 Department of Public Services - AMK  
 Printed 08/04/014  
 Aerial Date: 2013

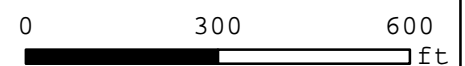
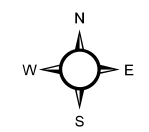


## Sewer Cleaning

**8th Street  
 Broadway to Canal  
 Televis, Clean, Televis.**

### Legend

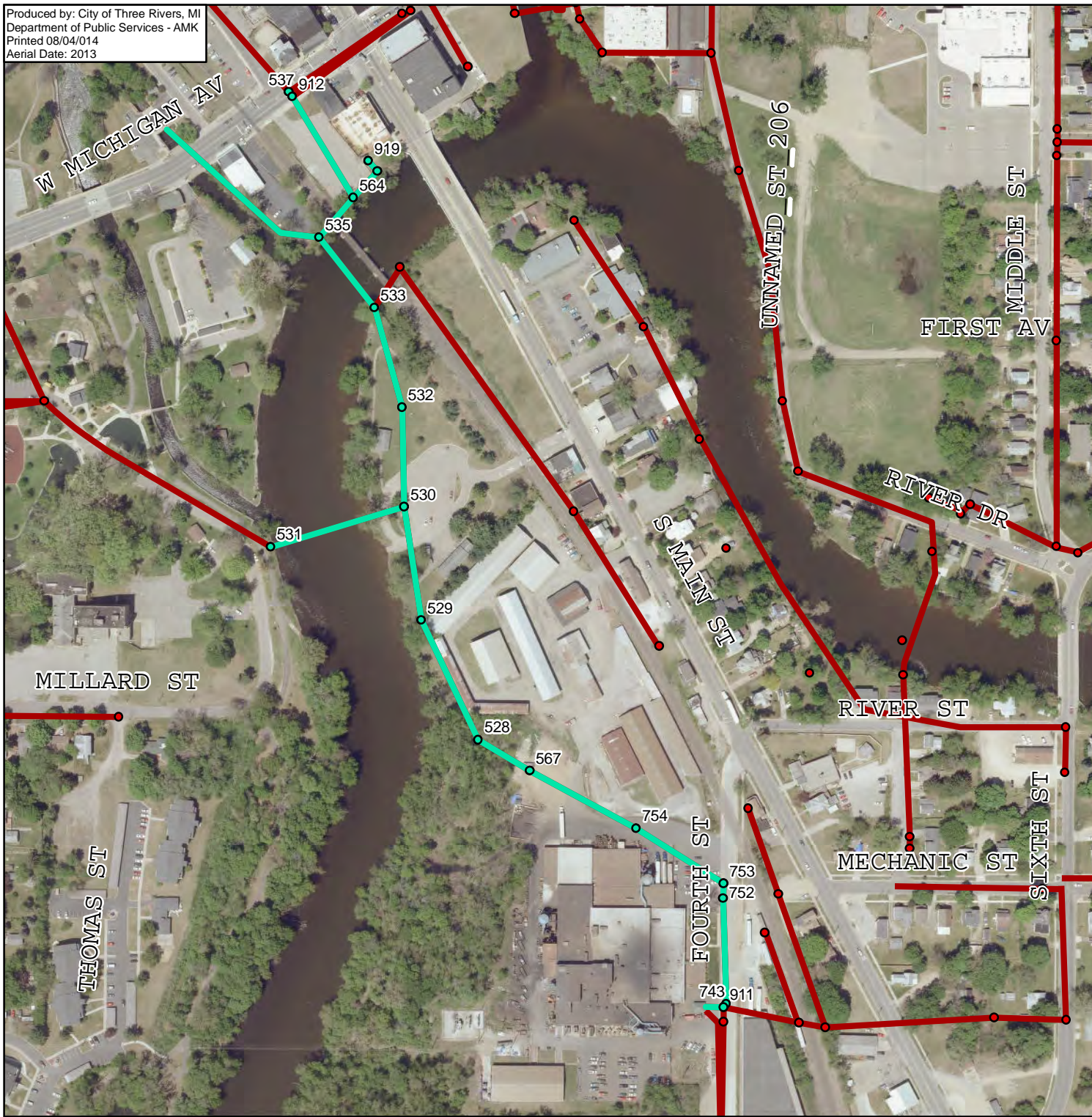
- Televised Sanitary MH
- Televised Sanitary Lines
- Sanitary MH
- Sanitary Lines



1 inch = 300 feet

This map is provided by the City of Three Rivers (the "City"). The person or entity receiving this map (the "User") agrees: (1) that there are no warranties of any kind; (2) that use of this map is at the Users sole risk; (3) that the City shall not be liable for any damages to User or any third party; and (4) this map may not be used by any third party without the specific written consent of the City.

Produced by: City of Three Rivers, MI  
 Department of Public Services - AMK  
 Printed 08/04/014  
 Aerial Date: 2013

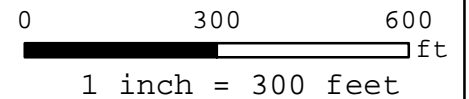
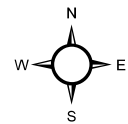


## Sewer Cleaning

River Area  
 Whitehouse Building to  
 4th Street Pumping Station  
 Televis, Clean, Televis.

### Legend

- Telescoped Sanitary MH
- Telescoped Sanitary Lines
- Sanitary MH
- Sanitary Lines



This map is provided by the City of Three Rivers (the "City"). The person or entity receiving this map (the "User") agrees: (1) that there are no warranties of any kind; (2) that use of this map is at the Users sole risk; (3) that the City shall not be liable for any damages to User or any third party; and (4) this map may not be used by any third party without the specific written consent of the City.

Produced by: City of Three Rivers, MI  
 Department of Public Services - AMK  
 Printed 08/04/014  
 Aerial Date: 2013

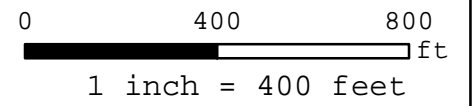
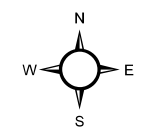


## Sewer Cleaning

**South Lincoln Avenue  
 Millard to Broadway,  
 minus King to Buck  
 Televis, Clean, Televis.**

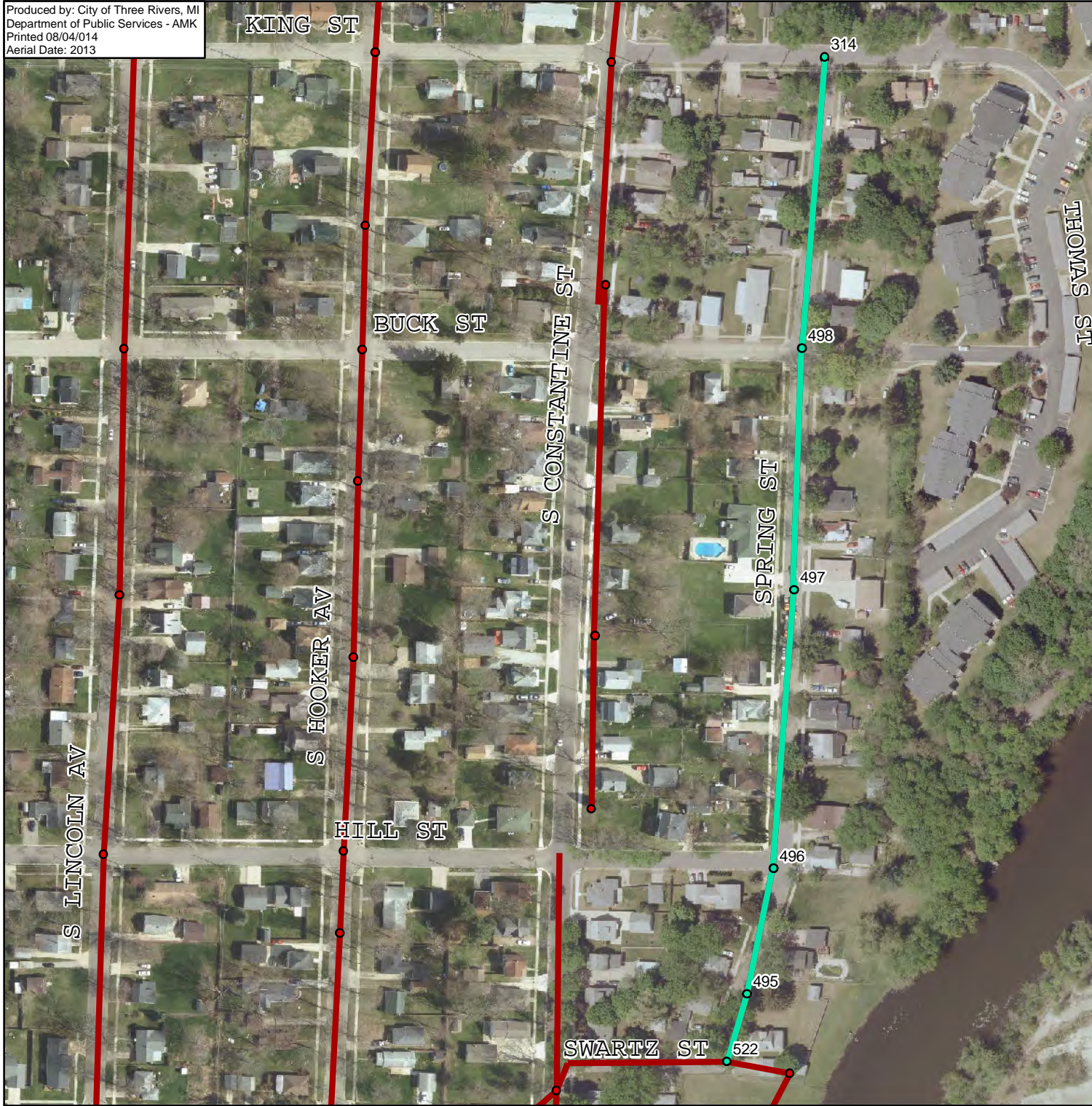
### Legend

- Televised Sanitary MH
- Televised Sanitary Lines
- Sanitary MH
- Sanitary Lines



This map is provided by the City of Three Rivers (the "City"). The person or entity receiving this map (the "User") agrees: (1) that there are no warranties of any kind; (2) that use of this map is at the Users sole risk; (3) that the City shall not be liable for any damages to User or any thrid party; and (4) this map may not be used by any third party without the specific written consent of the City.

Produced by: City of Three Rivers, MI  
 Department of Public Services - AMK  
 Printed 08/04/014  
 Aerial Date: 2013

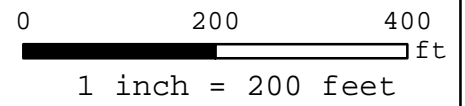
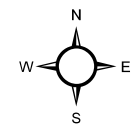


## Sewer Cleaning

Spring Street  
 King to Swartz  
 Televisе, Clean, Televisе.

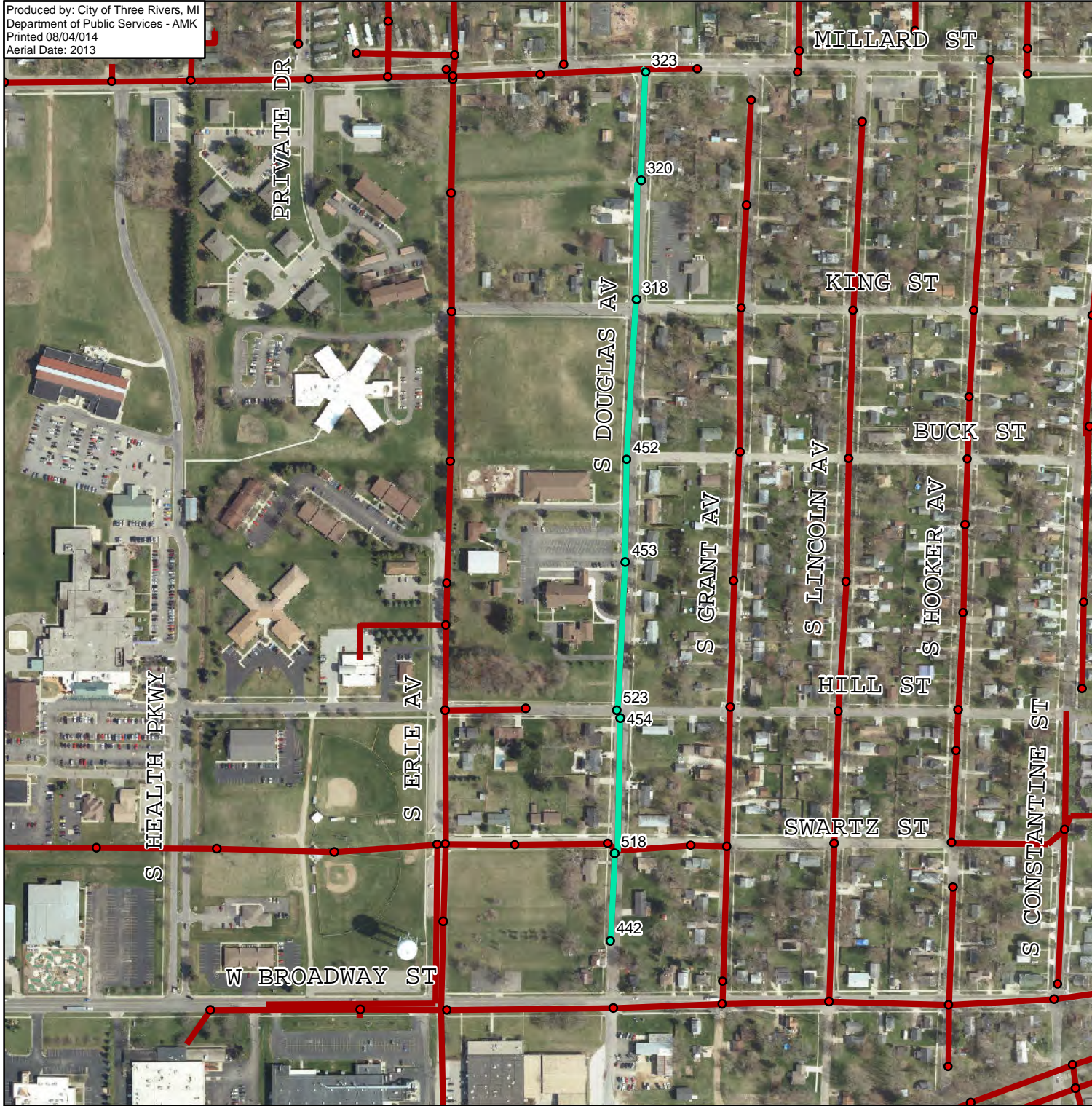
### Legend

- Televised Sanitary MH
- Televised Sanitary Lines
- Sanitary MH
- Sanitary Lines



This map is provided by the City of Three Rivers (the "City"). The person or entity receiving this map (the "User") agrees: (1) that there are no warranties of any kind; (2) that use of this map is at the User's sole risk; (3) that the City shall not be liable for any damages to User or any third party; and (4) this map may not be used by any third party without the specific written consent of the City.

Produced by: City of Three Rivers, MI  
 Department of Public Services - AMK  
 Printed 08/04/014  
 Aerial Date: 2013

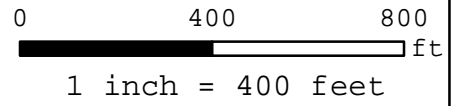
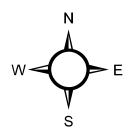


## Sewer Cleaning

South Douglas Avenue  
 Millard to Broadway  
 Televisé, Clean, Televisé.

### Legend

- Televised Sanitary MH
- Televised Sanitary Lines
- Sanitary MH
- Sanitary Lines



This map is provided by the City of Three Rivers (the "City"). The person or entity receiving this map (the "User") agrees: (1) that there are no warranties of any kind; (2) that use of this map is at the Users sole risk; (3) that the City shall not be liable for any damages to User or any third party; and (4) this map may not be used by any third party without the specific written consent of the City.

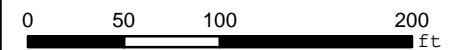
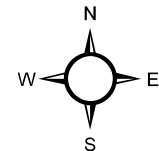
Produced by the City of Three Rivers, MI  
Department of Public Services - AMK  
Date Printed: 08/04/2014  
Aerial Date: 2013



Scouter Park  
Middle Street to St. Joseph River  
Televise. Clean. Televisive.

### Legend

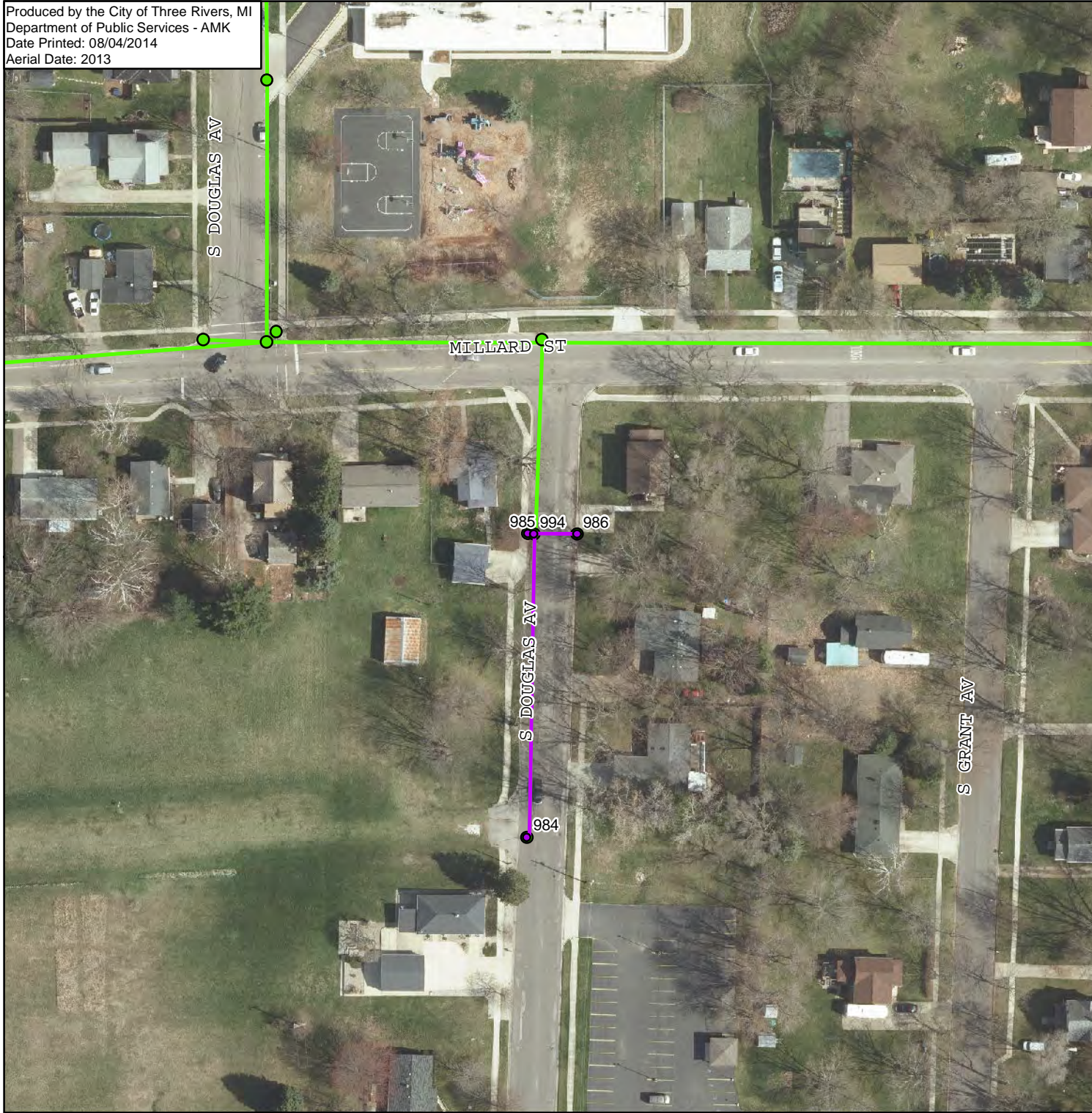
- Televised Storm MH
- Televised Storm Lines
- Storm MH
- Storm Lines



1 inch = 100 feet

This map is provided by the City of Three Rivers (the "City"). The person or entity receiving this map (the "User") agrees: (1) that there are no warranties of any kind; (2) that use of this map is at the Users sole risk; (3) that the City shall not be liable for any damages to User or any third party; and (4) this map may not be used by any third party without the specific written consent of the City.

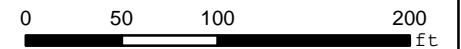
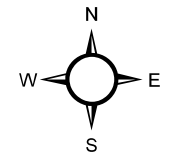
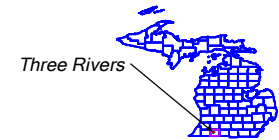
Produced by the City of Three Rivers, MI  
Department of Public Services - AMK  
Date Printed: 08/04/2014  
Aerial Date: 2013



South Douglas Avenue  
~100' South of Millard  
Clean, Televisive.

### Legend

- Televised Storm MH
- Televised Storm Lines
- Storm MH
- Storm Lines



1 inch = 100 feet

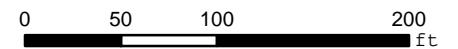
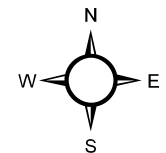
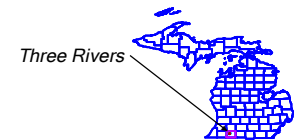
This map is provided by the City of Three Rivers (the "City"). The person or entity receiving this map (the "User") agrees: (1) that there are no warranties of any kind; (2) that use of this map is at the Users sole risk; (3) that the City shall not be liable for any damages to User or any third party; and (4) this map may not be used by any third party without the specific written consent of the City.



Wheeler Street  
West to Maple  
Clean. Televised.

### Legend

- Televised Storm MH
- Televised Storm Lines
- Storm MH
- Storm Lines



1 inch = 100 feet

This map is provided by the City of Three Rivers (the "City"). The person or entity receiving this map (the "User") agrees: (1) that there are no warranties of any kind; (2) that use of this map is at the Users sole risk; (3) that the City shall not be liable for any damages to User or any third party; and (4) this map may not be used by any third party without the specific written consent of the City.