



# ***ANALYTICAL TESTING & CONSULTING SERVICES, INC.***

---

*14625 Doster Road  
Plainwell, Michigan 49080  
Phone: 269-664-6474  
Fax: 269-664-6406  
Email: Atcsinc@aol.com*

## **ASBESTOS SURVEY REPORT FOR**

Alex Ebestein  
City of Three Rivers  
1015 S. Lincoln Avenue  
Three Rivers, Michigan 49093

**AT**

512 W. Michigan Avenue  
Three Rivers, Michigan 49093

## **SURVEY CONDUCTED**

September 10<sup>th</sup>, 2015

**BY**

**ANALYTICAL TESTING &  
CONSULTING SERVICES, INC.**

**Lab #: 1757**

# ***ANALYTICAL TESTING & CONSULTING SERVICES, INC.***

---

*14625 Doster Road  
Plainwell, Michigan 49080  
(269) 664-6474  
FAX: (269) 664-6406*

September 25, 2015

Alex Ebestein  
City of Three Rivers  
1015 S. Lincoln Avenue  
Three Rivers, Michigan 49093

Dear Mr. Ebestein,

Enclosed is the asbestos survey report conducted at 512 W. Michigan Avenue in Three Rivers, Michigan. Jon Fischer (A6646) of Analytical Testing conducted the inspection on September 10<sup>th</sup>, 2015. Analytical Testing was contracted by Alex Ebestein of the City of Three Rivers.

The following report details the locations and amounts of asbestos containing materials. All locations of suspect materials were identified as Presumed Asbestos Containing Materials (PACM) until sampling was conducted.

The scope of this study was to provide as complete and comprehensive of an evaluation as professionally practical. However, inherent constraints of time, observations, findings, results and conclusions are limited accordingly and to those apparent at the time. It should not be construed that actions taken as a result of this study will achieve complete compliance with every regulatory standard nor prevent every possible accident or loss. Nor should it be considered that any recommendations noted are the only possible actions to be taken. Management should assess and analyze each thought in relation to company resources, objectives and activities.

Analytical Testing conducts quantity estimates according to what is visible at the time of testing. Many materials are concealed within walls/ceilings and may be exposed during demolition/renovation activities. If this occurs, contractors should stop work and contact ATCS to conduct sampling of newly discovered materials.

This report should not be used as a restricted source of information for bid preparation or for notification to regulatory agencies. Contractors should verify quantity or amounts prior to bidding and/or submitting 10 days notifications.

The following is a summary to help understand the asbestos survey data form contained in this report.

**Homogeneous Area (HA) Description** - This form shows each homogeneous area discovered during the inspection of the site. This will provide a common reference point for the inspector and building owner when discussing a homogeneous area.

**SM/TSI/MM** - The locations are identified as SM-Surfacing Material; TSI-Thermal Systems Insulation; or MM-Miscellaneous Materials.

**F/NF** - These symbols indicate whether the suspect homogeneous area was composed of friable (F) or Non-friable (NF) material.

**Physical Condition** - Each homogeneous area is judged on its physical condition as explained on the bottom of the form.

**Size** - Each homogeneous area is quantified in units as explained at the bottom of the form.

**Sample Numbers** - The sample number is listed to help identify the location and corresponding HA# for that sample.

**Hazard Assessment Recommendations: Assessment Form** - This portion of the form contains the hazard assessment of the suspect locations identified in the survey. The reason for the classifications is also located in this area of the form.

The homogenous areas that tested *positive* are identified in the following table:

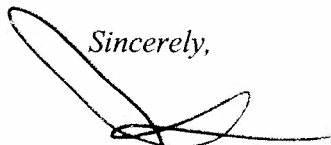
HOMOGENEOUS AREA (HA) NAME	HA #	F / NF	CLASSIFICATION SM/TSI/MM	SIZE SF / LF / MF
Plaster	B	F	SM	~ 950 SF
TSI Duct Wrap	E	F	TSI	~ 25 LF

Key: ND= None Detected F = Friable NF = None-friable SF = Square Feet LF = Linear Feet MF = Muddled Fittings  
SM = Surfacing Material TSI = Thermal Systems Insulation MM = Miscellaneous Material TBD=To Be Determined

---

*Please review the enclosed data and call if you have any questions.*

*Sincerely,*



**Douglas Haase**  
**Director of Laboratory Services**  
**Accreditation # A1370**

# ASBESTOS SURVEY SUMMARY

**Building Name:** Commercial

**Date:** 09/10/15

**Building #:** 512 W. Michigan Avenue in Three Rivers, Michigan

## HOMOGENEOUS AREA REPORT

HOMOGENEOUS AREA (HA) NAME	HA #	F / NF	K / A / N	CLASSIFICATION SM/TSI/MM	PHYSICAL CONDITION	SIZE SF / LF
12"x12" Tan/Bone Floor Tile in the Bathroom	A	F	N	MM	4	~ 21 SF
Plaster	B	F	K	SM	6	~ 950 SF
2'x4' Ceiling Tile in the Front & Middle Offices	C	NF	N	MM	6	~ 240 SF
18"x18" Ceiling Tile in the Front Store Room	D	NF	N	MM	6	~ 228 SF
TSI Duct Wrap (Octopus)	E	F	K	TSI	6	~ 25 LF
Window Glazing	F	NF	N	MM	6	~ 128 LF / ~ 19 SF
Roofing Shingles	G	NF	N	MM	6	~ 650 SF
Exterior White Asphalt Siding under Aluminum Siding	H	NF	N	MM	6	~ 1,350 SF
Exterior Yellow/Copper Asphalt Siding under HA: H	I	NF	N	MM	6	~ 1,350 SF

## ASBESTOS SURVEY DATA FORM

**LOCATION:** Commercial

**LAB:** 1757

**ADDRESS:** 512 W. Michigan Avenue in Three Rivers, Michigan

**DATE:** 09/10/15

**HA#:** A

**HA DESCRIPTION:** 12"x12" Tan/Bone Floor Tile in the Bathroom

HA LOCATION	Type SM/TSI/MM	Friability F/NF	Physical Condition	Size SF/LF/MF
Bathroom	MM	NF	4	~ 21 SF
<b>TOTAL</b>				<b>~ 21 SF</b>

Sample No.	Description and Location	Results (%)
1757-01	Sample of tile taken near the threshold	None Detected
*Note: All samples were collected in a statistically random manner representative of Homogeneous Area in accordance with 40 CFR 763.86.		

Location	Recommendations
HA-A	Non asbestos

**Key:**      F = Friable      NF = Non-friable      SF = Square Feet      LF = Linear Feet      MF = Mudded Fittings  
              SM = Surfacing Material      TSI = Thermal Systems Insulation      MM = Miscellaneous Material

**Condition:** 1 = Good    2 = Potential for Damage    3 = Potential for Significant Damage    4 = Damaged    5 = Damaged + Potential for Damage  
                                  6 = Damaged + Potential for Significant Damage    7 = Significantly Damaged

## ASBESTOS SURVEY DATA FORM

**LOCATION:** Commercial

**LAB:** 1757

**ADDRESS:** 512 W. Michigan Avenue in Three Rivers, Michigan

**DATE:** 09/10/15

**HA#:** B

**HA DESCRIPTION:** Plaster

HA LOCATION	Type SM/TSI/MM	Friability F/NF	Physical Condition	Size SF/LF/MF
Throughout building	SM	F	6	~ 950 SF
<b>TOTAL</b>				<b>~ 950 SF</b>

Sample No.	Description and Location	Results (%)
1757-02	Sample of plaster taken from the stairs to the basement on side D wall	Layer 1: None Detected Layer 2: 2% Chrysotile
1757-03	Sample of plaster taken from the stairs to the second floor on side B wall	2% Chrysotile
1757-04	Sample of plaster taken from the second floor back room on the right, side C wall	2% Chrysotile
*Note: All samples were collected in a statistically random manner representative of Homogeneous Area in accordance with 40 CFR 763.86.		

Location	Recommendations
HA-B	Remove asbestos prior to demolition/renovation

**Key:**      **F** = Friable      **NF** = Non-friable      **SF** = Square Feet      **LF** = Linear Feet      **MF** = Mudded Fittings  
                  **SM** = Surfacing Material      **TSI** = Thermal Systems Insulation      **MM** = Miscellaneous Material

**Condition:** 1 = Good    2 = Potential for Damage    3 = Potential for Significant Damage    4 = Damaged    5 = Damaged + Potential for Damage  
                                  6 = Damaged + Potential for Significant Damage    7 = Significantly Damaged

## ASBESTOS SURVEY DATA FORM

**LOCATION:** Commercial

**LAB:** 1757

**ADDRESS:** 512 W. Michigan Avenue in Three Rivers, Michigan

**DATE:** 09/10/15

**HA#:** C

**HA DESCRIPTION:** 2'x4' Ceiling Tile in the Front & Middle Offices

HA LOCATION	Type SM/TSI/MM	Friability F/NF	Physical Condition	Size SF/LF/MF
Front Office	MM	NF	6	~ 48 SF
Middle Office	MM	NF	6	~ 192 SF
<b>TOTAL</b>				<b>~ 240 SF</b>

Sample No.	Description and Location	Results (%)
1757-05	Sample of tile taken from the middle of the middle office	None Detected
*Note: All samples were collected in a statistically random manner representative of Homogeneous Area in accordance with 40 CFR 763.86.		

Location	Recommendations
HA-C	Non asbestos

Key:      F = Friable      NF = Non-friable      SF = Square Feet      LF = Linear Feet      MF = Mudded Fittings  
             SM = Surfacing Material      TSI = Thermal Systems Insulation      MM = Miscellaneous Material

Condition: 1 = Good    2 = Potential for Damage    3 = Potential for Significant Damage    4 = Damaged    5 = Damaged + Potential for Damage  
                                  6 = Damaged + Potential for Significant Damage    7 = Significantly Damaged

## ASBESTOS SURVEY DATA FORM

**LOCATION:** Commercial

**LAB:** 1757

**ADDRESS:** 512 W. Michigan Avenue in Three Rivers, Michigan

**DATE:** 09/10/15

**HA#:** D

**HA DESCRIPTION:** 18"x18" Ceiling Tile in the Front Store Room

HA LOCATION	Type SM/TSI/MM	Friability F/NF	Physical Condition	Size SF/LF/MF
Front Store Room	MM	NF	6	~ 228 SF
<b>TOTAL</b>				<b>~ 228 SF</b>

Sample No.	Description and Location	Results (%)
1757-06	Sample of tile taken from the middle of the front store room	None Detected
*Note: All samples were collected in a statistically random manner representative of Homogeneous Area in accordance with 40 CFR 763.86.		

Location	Recommendations
HA-D	Non asbestos

**Key:**      **F** = Friable      **NF** = Non-friable      **SF** = Square Feet      **LF** = Linear Feet      **MF** = Mudded Fittings  
              **SM** = Surfacing Material      **TSI** = Thermal Systems Insulation      **MM** = Miscellaneous Material

**Condition:** 1 = Good    2 = Potential for Damage    3 = Potential for Significant Damage    4 = Damaged    5 = Damaged + Potential for Damage  
                                  6 = Damaged + Potential for Significant Damage    7 = Significantly Damaged



## ASBESTOS SURVEY DATA FORM

**LOCATION:** Commercial

**LAB:** 1757

**ADDRESS:** 512 W. Michigan Avenue in Three Rivers, Michigan

**DATE:** 09/10/15

**HA#:** E

**HA DESCRIPTION:** TSI Duct Wrap (Octopus)

HA LOCATION	Type SM/TSI/MM	Friability F/NF	Physical Condition	Size SF/LF/MF
Ducts from Octopus	TSI	F	6	~ 25 LF
<b>TOTAL</b>				<b>~ 25 LF</b>

Sample No.	Description and Location	Results (%)
1757-07	Sample of wrap taken from the duct in the room outside of the furnace area	65% Chrysotile
1757-08	Sample of duct taken from the right side of the octopus	65% Chrysotile
1757-09	Sample of wrap taken from the left side of the octopus	60% Chrysotile
*Note: All samples were collected in a statistically random manner representative of Homogeneous Area in accordance with 40 CFR 763.86.		

Location	Recommendations
HA-E	Remove asbestos prior to demolition/renovation

Key:      **F** = Friable      **NF** = Non-friable      **SF** = Square Feet      **LF** = Linear Feet      **MF** = Mudded Fittings  
              **SM** = Surfacing Material      **TSI** = Thermal Systems Insulation      **MM** = Miscellaneous Material

**Condition:** 1 = Good    2 = Potential for Damage    3 = Potential for Significant Damage    4 = Damaged    5 = Damaged + Potential for Damage  
                                  6 = Damaged + Potential for Significant Damage    7 = Significantly Damaged

## ASBESTOS SURVEY DATA FORM

**LOCATION:** Commercial

**LAB:** 1757

**ADDRESS:** 512 W. Michigan Avenue in Three Rivers, Michigan

**DATE:** 09/10/15

**HA#:** F

**HA DESCRIPTION:** Window Glazing

HA LOCATION	Type SM/TSI/MM	Friability F/NF	Physical Condition	Size SF/LF/MF
16 Windows	MM	NF	6	~ 128 LF / ~ 19 SF
TOTAL				~ 128 LF / ~ 19 SF

Sample No.	Description and Location	Results (%)
1757-10	Sample of glazing taken from the window on side D wall of the front room on the second floor	None Detected
*Note: All samples were collected in a statistically random manner representative of Homogeneous Area in accordance with 40 CFR 763.86.		

Location	Recommendations
HA-F	Non asbestos

**Key:** F = Friable NF = Non-friable SF = Square Feet LF = Linear Feet MF = Mudded Fittings  
SM = Surfacing Material TSI = Thermal Systems Insulation MM = Miscellaneous Material

**Condition:** 1 = Good 2 = Potential for Damage 3 = Potential for Significant Damage 4 = Damaged 5 = Damaged + Potential for Damage  
6 = Damaged + Potential for Significant Damage 7 = Significantly Damaged

## ASBESTOS SURVEY DATA FORM

**LOCATION:** Commercial

**LAB:** 1757

**ADDRESS:** 512 W. Michigan Avenue in Three Rivers, Michigan

**DATE:** 09/10/15

**HA#:** G

**HA DESCRIPTION:** Roofing Shingles

HA LOCATION	Type SM/TSI/MM	Friability F/NF	Physical Condition	Size SF/LF/MF
Roof	MM	NF	6	~ 650 SF
<b>TOTAL</b>				<b>~ 650 SF</b>

Sample No.	Description and Location	Results (%)
1757-11	Sample of shingles taken from the roof above the door on side C	None Detected
*Note: All samples were collected in a statistically random manner representative of Homogeneous Area in accordance with 40 CFR 763.86.		

Location	Recommendations
HA-G	Non asbestos

**Key:**      **F** = Friable      **NF** = Non-friable      **SF** = Square Feet      **LF** = Linear Feet      **MF** = Mudded Fittings  
                  **SM** = Surfacing Material      **TSI** = Thermal Systems Insulation      **MM** = Miscellaneous Material

**Condition:** 1 = Good    2 = Potential for Damage    3 = Potential for Significant Damage    4 = Damaged    5 = Damaged + Potential for Damage  
    6 = Damaged + Potential for Significant Damage    7 = Significantly Damaged

## ASBESTOS SURVEY DATA FORM

**LOCATION:** Commercial

**LAB:** 1757

**ADDRESS:** 512 W. Michigan Avenue in Three Rivers, Michigan

**DATE:** 09/10/15

**HA#:** H

**HA DESCRIPTION:** Exterior White Asphalt Siding under Aluminum Siding

HA LOCATION	Type SM/TSI/MM	Friability F/NF	Physical Condition	Size SF/LF/MF
Under Aluminum Siding	MM	NF	6	~ 1,350 SF
TOTAL				~ 1,350 SF

Sample No.	Description and Location	Results (%)
1757-12	Sample of asphalt taken from side B near side A	None Detected
*Note: All samples were collected in a statistically random manner representative of Homogeneous Area in accordance with 40 CFR 763.86.		

Location	Recommendations
HA-H	Non asbestos

**Key:** F = Friable NF = Non-friable SF = Square Feet LF = Linear Feet MF = Mudded Fittings  
SM = Surfacing Material TSI = Thermal Systems Insulation MM = Miscellaneous Material

**Condition:** 1 = Good 2 = Potential for Damage 3 = Potential for Significant Damage 4 = Damaged 5 = Damaged + Potential for Damage  
6 = Damaged + Potential for Significant Damage 7 = Significantly Damaged

## ASBESTOS SURVEY DATA FORM

**LOCATION:** Commercial

**LAB:** 1757

**ADDRESS:** 512 W. Michigan Avenue in Three Rivers, Michigan

**DATE:** 09/10/15

**HA#:** I

**HA DESCRIPTION:** Exterior Yellow/Copper Asphalt Siding under HA: H

HA LOCATION	Type SM/TSI/MM	Friability F/NF	Physical Condition	Size SF/LF/MF
Under HA: H	MM	NF	6	~ 1,350 SF
<b>TOTAL</b>				<b>~ 1,350 SF</b>

Sample No.	Description and Location	Results (%)
1757-13	Sample of asphalt siding taken from side B near side A	None Detected
*Note: All samples were collected in a statistically random manner representative of Homogeneous Area in accordance with 40 CFR 763.86.		

Location	Recommendations
HA-I	Non asbestos

**Key:**    F = Friable    NF = Non-friable    SF = Square Feet    LF = Linear Feet    MF = Mudded Fittings  
           SM = Surfacing Material    TSI = Thermal Systems Insulation    MM = Miscellaneous Material

**Condition:** 1 = Good    2 = Potential for Damage    3 = Potential for Significant Damage    4 = Damaged    5 = Damaged + Potential for Damage  
    6 = Damaged + Potential for Significant Damage    7 = Significantly Damaged

## **Appendix Table of Contents**

- A) Sample Results
- B) Chain of Custody
- C) Site Location Map
- D) ATCS Credentials

# **Appendix A**

## Sample Results

# **Appendix B**

## Chain of Custody



# CHAIN OF CUSTODY RECORD

ANALYTICAL TESTING & CONSULTING SERVICES, INC.

14625 DOSTER ROAD

PLAINWELL, MI 49080

PH: 269-664-6474

FAX: 269-664-6406

BILLED TO		PROJECT INFORMATION				ANALYSIS REQUIRED		DISPOSAL	
Name: Analytical Testing & Consulting Services, Inc.		Project Name: City of TANNET ALTON							
Address: 14625 Doster Rd.		Project Location: 510 W. MICHAEL							
City: Plainwell		Project No.: 1957							
State: MI 49080		Project Contact:							
Phone No: 269/ 664-6474		Phone/Fax No.:							
Fax No.: 269/ 664-6406		Date Sampled: 9/10/15							
Sampled by: Jon Fischer		Samples Preserved: <input type="checkbox"/> Yes <input type="checkbox"/> No Received Cold: <input type="checkbox"/> Yes <input type="checkbox"/> No						COMMENTS/ SOCIAL SECURITY#	
Sample #	Description	Time On	Time Off	Total Time	Start Flow	Stop Flow	Avg. Flow		
1957-01	12"x12" Floor tile TAN/BONE								
1957-02	Plaster stairs to basement								
1957-03	Plaster stairs to 2nd fl. BR-11								
1957-04	Plaster 2nd fl. back room Right corner								
1957-05	2'x4' ceiling tile								
1957-06	18"x18" ceiling tile								
1957-07	Duct wrap Room outside furnace room								
1957-08	Duct wrap Right side octopus								
1957-09	Duct wrap Left side octopus								
1957-10	WIKON GRABING DRY front room 1011010101								
* Do wipe samples submitted meet ASTM E1792 requirements? Yes <input type="checkbox"/> No <input type="checkbox"/>									
Samples Relinquished by:		Date:	Time:	Accepted by:		Date:	Time:		
Jon Fischer		9/14/15							
Special Instructions:									

### CHAIN OF CUSTODY RECORD

ANALYTICAL TESTING &amp; CONSULTING SERVICES, INC.

**1462S DOSTER ROAD**

**PLAINWELL, MI 49080**

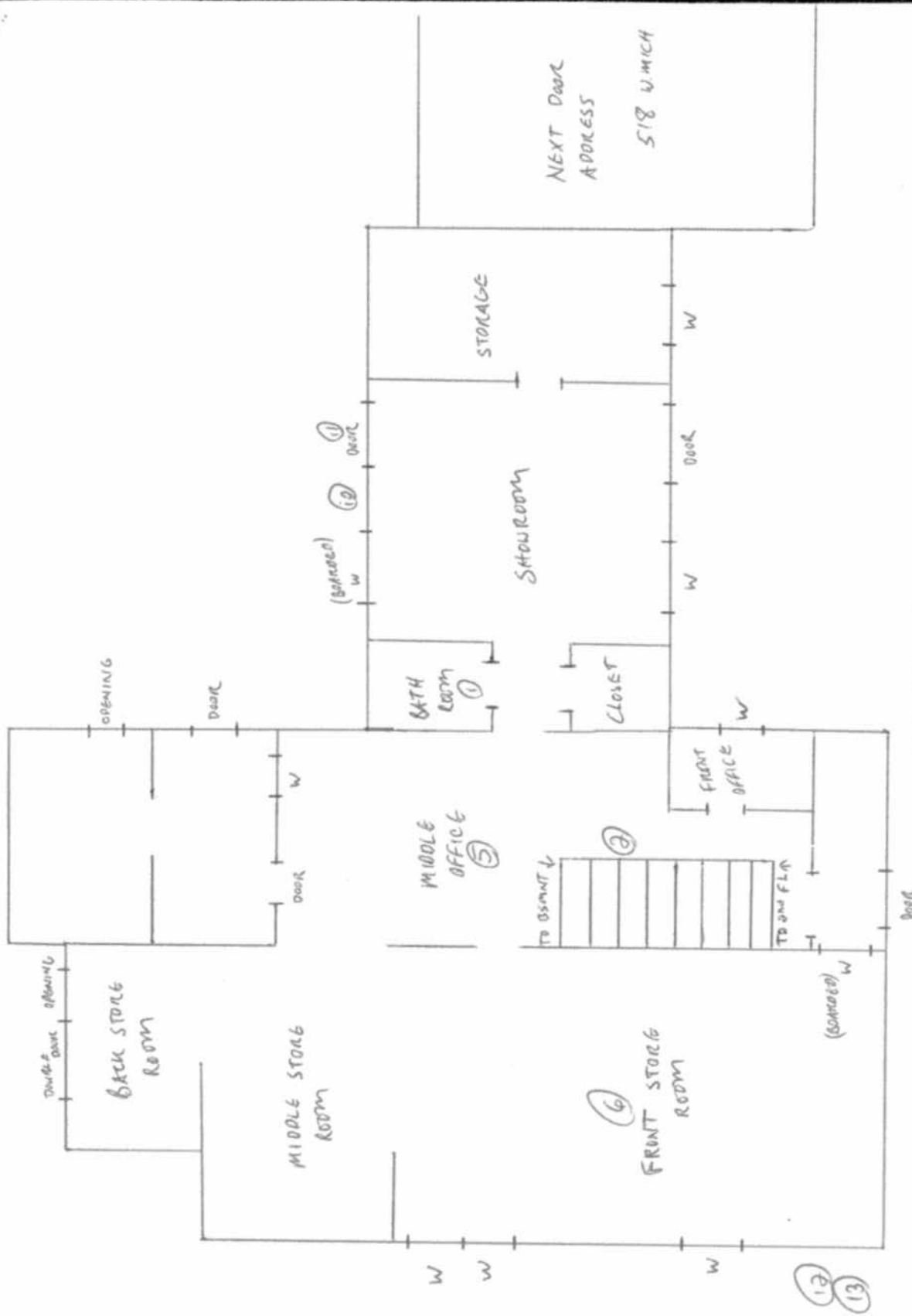
**PH: 269-664-6474**

**FAX: 269-664-6406**

[illegible]

# **Appendix C**

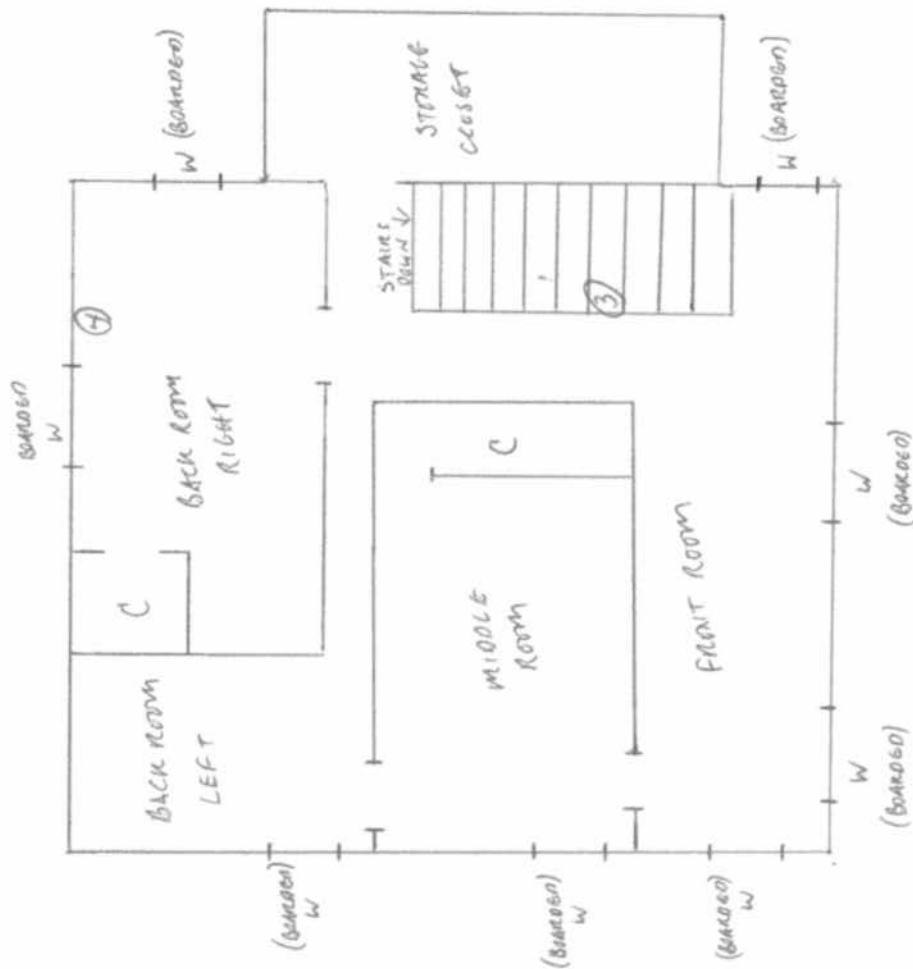
## Site Location Map



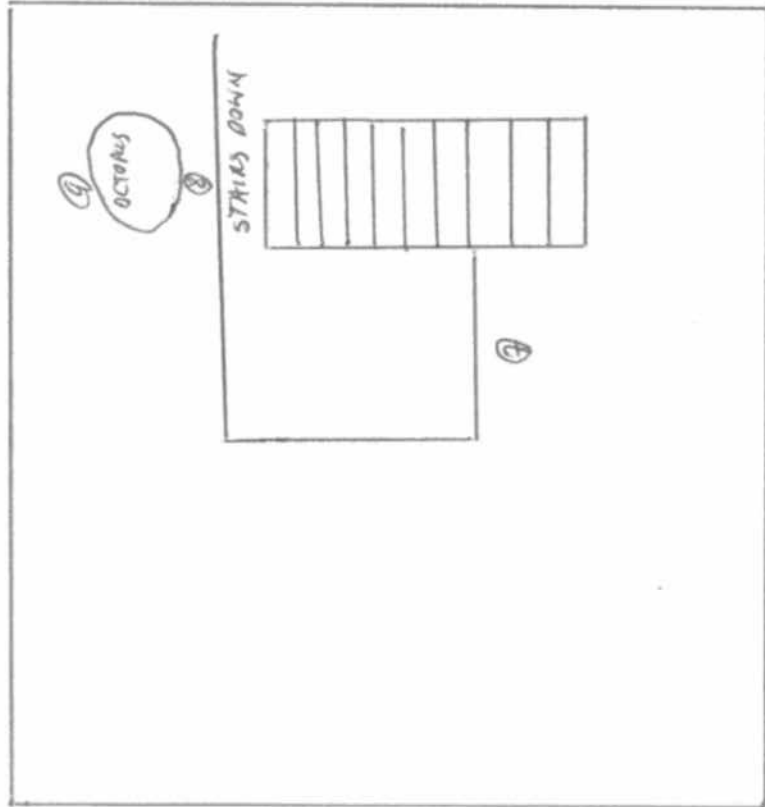
TOLERANCES		REVISIONS			1st Floor	
EXCEPT AS NOTED		NO	DATE	BY		
DECIMAL		1				
FRACTIONAL		2				
ANGULAR		3				
		4				
		5				

518 W. MICHIGAN		SCALE	N/A	MATERIAL
DRAWN BY	JF	CHECKED	DATE 9/10/15	DRAWING NO. LAB #
		TRACED	APPROVED	1757



TOLERANCES EXCEPT AS NOTED		REVISIONS			2nd Floor	
		NO	DATE	BY		
DECIMAL		1			512 W. MICHIGAN, THREE RIVERS	
±		2				
FRACTIONAL		3				
±		4				
ANGULAR		5				
±						
		DRAWN BY JF		SCALE N/A	MATERIAL	
		CHECKED		DATE 9/10/15	DRAWING NO. LAB #	
		TRACED		APPROVED	1759	



TOLERANCES EXCEPT AS NOTED		REVISIONS			BAS GMENT	
		NO	DATE	BY		
DECIMAL		1				512 W. MICHA STAGE RIGGS
±		2				
FRACTIONAL		3				
±		4				
ANGULAR		5				
±						
DRAWN BY IF SCALE N/A MATERIAL						
CHECKED DATE 9/10/15						
TRACED APPROVED						
						1757

# **Appendix D**

## ATCS Credentials

EPA AHERA/ Michigan Department of Licensing and Regulatory Affairs approved in compliance with the training requirements as mandated by TSCA TITLE II, 40 CFR 763, NESHAPS 40 CFR 61.145 (c)(8) and Michigan Public Act 440 of 1988.

# Certificate of Award

*This is to Certify that*

**Jon Fischer (XXX-XX-0875)**

has been awarded this Certificate for the completion of the  
**4 HOUR ASBESTOS INSPECTOR REFRESHER  
TRAINING COURSE**

**Certificate #: 15-348**

**Date of Course: August 17<sup>th</sup>, 2015  
Expiration Date: August 17<sup>th</sup>, 2016**

  
**Course Instructor, Douglas A. Haase**

**ANALYTICAL TESTING & CONSULTING SERVICES, INC.  
14625 Doster Road in Plainwell, Michigan 49080  
(269) 664-6474**