



ANALYTICAL TESTING & CONSULTING SERVICES, INC.

*14625 Doster Road
Plainwell, Michigan 49080
Phone: 269-664-6474
Fax: 269-664-6406
Email: Atcsinc@aol.com*

ASBESTOS SURVEY REPORT FOR

Alex Ebestein
City of Three Rivers
1015 S. Lincoln Avenue
Three Rivers, Michigan 49093

AT

318 E. Michigan Avenue
Three Rivers, Michigan 49093

SURVEY CONDUCTED

September 10th, 2015

BY

**ANALYTICAL TESTING &
CONSULTING SERVICES, INC.**

Lab #: 1758

ANALYTICAL TESTING & CONSULTING SERVICES, INC.

*14625 Doster Road
Plainwell, Michigan 49080
(269) 664-6474
FAX: (269) 664-6406*

September 25, 2015

Alex Ebestein
City of Three Rivers
1015 S. Lincoln Avenue
Three Rivers, Michigan 49093

Dear Mr. Ebestein,

Enclosed is the asbestos survey report conducted at 318 E. Michigan Avenue in Three Rivers, Michigan. Jon Fischer (A6646) of Analytical Testing conducted the inspection on September 10th, 2015. Analytical Testing was contracted by Alex Ebestein of the City of Three Rivers.

The following report details the locations and amounts of asbestos containing materials. All locations of suspect materials were identified as Presumed Asbestos Containing Materials (PACM) until sampling was conducted.

The scope of this study was to provide as complete and comprehensive of an evaluation as professionally practical. However, inherent constraints of time, observations, findings, results and conclusions are limited accordingly and to those apparent at the time. It should not be construed that actions taken as a result of this study will achieve complete compliance with every regulatory standard nor prevent every possible accident or loss. Nor should it be considered that any recommendations noted are the only possible actions to be taken. Management should assess and analyze each thought in relation to company resources, objectives and activities.

Analytical Testing conducts quantity estimates according to what is visible at the time of testing. Many materials are concealed within walls/ceilings and may be exposed during demolition/renovation activities. If this occurs, contractors should stop work and contact ATCS to conduct sampling of newly discovered materials.

This report should not be used as a restricted source of information for bid preparation or for notification to regulatory agencies. Contractors should verify quantity or amounts prior to bidding and/or submitting 10 days notifications.

The following is a summary to help understand the asbestos survey data form contained in this report.

Homogeneous Area (HA) Description - This form shows each homogeneous area discovered during the inspection of the site. This will provide a common reference point for the inspector and building owner when discussing a homogeneous area.

SM/TSI/MM - The locations are identified as SM-Surfacing Material; TSI-Thermal Systems Insulation; or MM-Miscellaneous Materials.

F/NF - These symbols indicate whether the suspect homogeneous area was composed of friable (F) or None-friable (NF) material.

Physical Condition - Each homogeneous area is judged on its physical condition as explained on the bottom of the form.

Size - Each homogeneous area is quantified in units as explained at the bottom of the form.

Sample Numbers - The sample number is listed to help identify the location and corresponding HA# for that sample.

Hazard Assessment Recommendations: Assessment Form - This portion of the form contains the hazard assessment of the suspect locations identified in the survey. The reason for the classifications is also located in this area of the form.

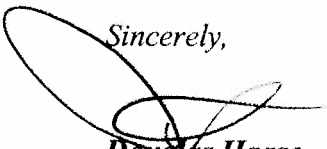
The homogenous areas that tested ***positive*** are identified in the following table:

| HOMOGENEOUS AREA (HA) NAME | HA # | F / NF | CLASSIFICATION SM/TSI/MM | SIZE SF / LF / MF |
|----------------------------|------|--------|-----------------------------|----------------------|
| Exterior Transite Siding | F | NF | MM | ~ 13 SF |

Key: ND= None Detected F = Friable NF = None-friable SF = Square Feet LF = Linear Feet MF = Mudded Fittings
SM = Surfacing Material TSI = Thermal Systems Insulation MM = Miscellaneous Material TBD=To Be Determined

Please review the enclosed data and call if you have any questions.

Sincerely,


Douglas Haase
Director of Laboratory Services
Accreditation # A1370

ASBESTOS SURVEY SUMMARY

Building Name: Residential Units

Date: 09/10/15

Building #: 318 E. Michigan Avenue in Three Rivers, Michigan

HOMOGENEOUS AREA REPORT

| HOMOGENEOUS AREA (HA) NAME | HA # | F / NF | K / A / N | CLASSIFICATION SM/TSI/MM | PHYSICAL CONDITION | SIZE SF / LF |
|--|------|--------|-----------|-----------------------------|-----------------------|---------------------|
| Grout between Ceramic Tile | A | NF | N | MM | 5 | ~ 1,167 SF |
| 12"x12" Stone Vinyl Floor Tile in Unit A Kitchen #1 | B | NF | N | MM | 5 | ~ 99 SF |
| 12"x12" Wood Pattern Vinyl Floor Tile in Unit C Bathroom #2 & Upstairs Landing | C | NF | N | MM | 4 | ~ 25 SF |
| Drywall with Mud | D | F | N | MM | 4 | ~ 2,650 SF |
| 12"x12" Stone/Brown Pattern Vinyl Floor Tile in Unit C | E | NF | N | MM | 6 | ~ 70 SF |
| Exterior Transite Siding in Unit C Back Porch | F | NF | K | MM | 6 | ~ 13 SF |
| Window Glazing | G | NF | N | MM | 6 | ~ 16 LF / ~ 2 SF |
| Flat Roofing Material | H | NF | N | MM | 6 | ~ 600 SF |

ASBESTOS SURVEY DATA FORM

LOCATION: Residential Units

LAB: 1758

ADDRESS: 318 E. Michigan Avenue in Three Rivers, Michigan

DATE: 09/10/15

HA#: A

HA DESCRIPTION: Grout between Ceramic Tile

| HA LOCATION | Type SM/TSI/MM | Friability F/NF | Physical Condition | Size SF/LF/MF |
|--|-------------------|--------------------|-----------------------|-------------------|
| Unit B – Living Room, Dining Room, Kitchen | MM | NF | 4 | ~ 434 SF |
| Unit B – Bathroom #2 | MM | NF | 4 | ~ 81 SF |
| Unit B – Kitchen #2 & Bathroom #3 | MM | NF | 5 | ~ 130 SF |
| Unit B – Bathroom #1 | MM | NF | 5 | ~ 16 SF |
| Unit C – Kitchen | MM | NF | 5 | ~ 88 SF |
| Unit A – Kitchen #2 | MM | NF | 5 | ~ 418 SF |
| TOTAL | | | | ~ 1,167 SF |

| Sample No. | Description and Location | Results (%) |
|---|--|---------------|
| 1758-01 | Sample of grout taken from the kitchen in unit B, near the threshold to bedroom #2 | None Detected |
| *Note: All samples were collected in a statistically random manner representative of Homogeneous Area in accordance with 40 CFR 763.86. | | |

| Location | Recommendations |
|----------|-----------------|
| HA-A | Non asbestos |

Key: F = Friable NF = Non-friable SF = Square Feet LF = Linear Feet MF = Mudded Fittings
SM = Surfacing Material TSI = Thermal Systems Insulation MM = Miscellaneous Material

Condition: 1 = Good 2 = Potential for Damage 3 = Potential for Significant Damage 4 = Damaged 5 = Damaged + Potential for Damage
6 = Damaged + Potential for Significant Damage 7 = Significantly Damaged

ASBESTOS SURVEY DATA FORM

LOCATION: Residential Units

LAB: 1758

ADDRESS: 318 E. Michigan Avenue in Three Rivers, Michigan

DATE: 09/10/15

HA#: B

HA DESCRIPTION: 12"x12" Stone Vinyl Floor Tile in Unit A Kitchen #1

| HA LOCATION | Type SM/TSI/MM | Friability F/NF | Physical Condition | Size SF/LF/MF |
|---------------------|-------------------|--------------------|-----------------------|------------------|
| Unit A – Kitchen #1 | MM | NF | 5 | ~ 99 SF |
| TOTAL | | | | ~ 99 SF |

| Sample No. | Description and Location | Results (%) |
|---|---|---------------|
| 1758-02 | Sample of tile taken from the middle of the kitchen in unit A | None Detected |
| *Note: All samples were collected in a statistically random manner representative of Homogeneous Area in accordance with 40 CFR 763.86. | | |

| Location | Recommendations |
|----------|-----------------|
| HA-B | Non asbestos |

Key: F = Friable NF = Non-friable SF = Square Feet LF = Linear Feet MF = Mudded Fittings
 SM = Surfacing Material TSI = Thermal Systems Insulation MM = Miscellaneous Material

Condition: 1 = Good 2 = Potential for Damage 3 = Potential for Significant Damage 4 = Damaged 5 = Damaged + Potential for Damage
 6 = Damaged + Potential for Significant Damage 7 = Significantly Damaged

ASBESTOS SURVEY DATA FORM

LOCATION: Residential Units

LAB: 1758

ADDRESS: 318 E. Michigan Avenue in Three Rivers, Michigan

DATE: 09/10/15

HA#: C

HA DESCRIPTION: 12"x12" Wood Pattern Vinyl Floor Tile in Unit C Bathroom #2 & Upstairs Landing

| HA LOCATION | Type SM/TSI/MM | Friability F/NF | Physical Condition | Size SF/LF/MF |
|---------------------------|-------------------|--------------------|-----------------------|------------------|
| Unit C – Bathroom #2 | MM | NF | 4 | ~ 16 SF |
| Unit C – Upstairs Landing | MM | NF | 4 | ~ 9 SF |
| TOTAL | | | | ~ 25 SF |

| Sample No. | Description and Location | Results (%) |
|---|--|---------------|
| 1758-03 | Sample of tile taken from the bathroom #2 in unit C, near the toilet | None Detected |
| *Note: All samples were collected in a statistically random manner representative of Homogeneous Area in accordance with 40 CFR 763.86. | | |

| Location | Recommendations |
|----------|-----------------|
| HA-C | Non asbestos |

Key: F = Friable NF = Non-friable SF = Square Feet LF = Linear Feet MF = Mudded Fittings
 SM = Surfacing Material TSI = Thermal Systems Insulation MM = Miscellaneous Material

Condition: 1 = Good 2 = Potential for Damage 3 = Potential for Significant Damage 4 = Damaged 5 = Damaged + Potential for Damage
 6 = Damaged + Potential for Significant Damage 7 = Significantly Damaged

ASBESTOS SURVEY DATA FORM**LOCATION:** Residential Units**LAB:** 1758**ADDRESS:** 318 E. Michigan Avenue in Three Rivers, Michigan**DATE:** 09/10/15**HA#:** D**HA DESCRIPTION:** Drywall with Mud

| HA LOCATION | Type SM/TSI/MM | Friability F/NF | Physical Condition | Size SF/LF/MF |
|----------------------|-------------------|--------------------|-----------------------|-------------------|
| Throughout all units | MM | F | 4 | ~ 2,650 SF |
| TOTAL | | | | ~ 2,650 SF |

| Sample No. | Description and Location | Results (%) |
|--|--|---------------|
| 1758-04 | Sample of drywall taken from unit A, kitchen #1, side D wall | None Detected |
| <i>*Note: All samples were collected in a statistically random manner representative of Homogeneous Area in accordance with 40 CFR 763.86.</i> | | |

| Location | Recommendations |
|----------|-----------------|
| HA-D | Non asbestos |

Key: **F** = Friable **NF** = Non-friable **SF** = Square Feet **LF** = Linear Feet **MF** = Mudded Fittings
 SM = Surfacing Material **TSI** = Thermal Systems Insulation **MM** = Miscellaneous Material

Condition: 1 = Good 2 = Potential for Damage 3 = Potential for Significant Damage 4 = Damaged 5 = Damaged + Potential for Damage
 6 = Damaged + Potential for Significant Damage 7 = Significantly Damaged

ASBESTOS SURVEY DATA FORM

LOCATION: Residential Units

LAB: 1758

ADDRESS: 318 E. Michigan Avenue in Three Rivers, Michigan

DATE: 09/10/15

HA#: E

HA DESCRIPTION: 12"x12" Stone/Brown Pattern Vinyl Floor Tile in Unit C

| HA LOCATION | Type SM/TSI/MM | Friability F/NF | Physical Condition | Size SF/LF/MF |
|------------------------------|-------------------|--------------------|-----------------------|------------------|
| Unit C – Living Room Foyer | MM | NF | 6 | ~ 20 SF |
| Unit C – First Floor Hallway | MM | NF | 6 | ~ 32 SF |
| Unit C – Bathroom #1 | MM | NF | 6 | ~ 18 SF |
| TOTAL | | | | ~ 70 SF |

| Sample No. | Description and Location | Results (%) |
|---|---|---------------|
| 1758-05 | Sample of tile taken from the middle of the hallway in unit C | None Detected |
| *Note: All samples were collected in a statistically random manner representative of Homogeneous Area in accordance with 40 CFR 763.86. | | |

| Location | Recommendations |
|----------|-----------------|
| HA-E | Non asbestos |

Key: F = Friable NF = Non-friable SF = Square Feet LF = Linear Feet MF = Mudded Fittings
 SM = Surfacing Material TSI = Thermal Systems Insulation MM = Miscellaneous Material

Condition: 1 = Good 2 = Potential for Damage 3 = Potential for Significant Damage 4 = Damaged 5 = Damaged + Potential for Damage
 6 = Damaged + Potential for Significant Damage 7 = Significantly Damaged

ASBESTOS SURVEY DATA FORM

LOCATION: Residential Units

LAB: 1758

ADDRESS: 318 E. Michigan Avenue in Three Rivers, Michigan

DATE: 09/10/15

HA#: F

HA DESCRIPTION: Exterior Transite Siding in Unit C Back Porch

| HA LOCATION | Type SM/TSI/MM | Friability F/NF | Physical Condition | Size SF/LF/MF |
|-------------------|-------------------|--------------------|-----------------------|------------------|
| Unit C Back Porch | MM | NF | 6 | ~ 13 SF |
| TOTAL | | | | ~ 13 SF |

| Sample No. | Description and Location | Results (%) |
|---|---|----------------|
| 1758-06 | Sample of transite taken from below the window in unit C back porch | 60% Chrysotile |
| *Note: All samples were collected in a statistically random manner representative of Homogeneous Area in accordance with 40 CFR 763.86. | | |

| Location | Recommendations |
|----------|--|
| HA-F | Remove asbestos prior to demolition/renovation |

Key: F = Friable NF = Non-friable SF = Square Feet LF = Linear Feet MF = Mudded Fittings
SM = Surfacing Material TSI = Thermal Systems Insulation MM = Miscellaneous Material

Condition: 1 = Good 2 = Potential for Damage 3 = Potential for Significant Damage 4 = Damaged 5 = Damaged + Potential for Damage
6 = Damaged + Potential for Significant Damage 7 = Significantly Damaged

ASBESTOS SURVEY DATA FORM

LOCATION: Residential Units

LAB: 1758

ADDRESS: 318 E. Michigan Avenue in Three Rivers, Michigan

DATE: 09/10/15

HA#: G

HA DESCRIPTION: Window Glazing

| HA LOCATION | Type SM/TSI/MM | Friability F/NF | Physical Condition | Size SF/LF/MF |
|-----------------------------|-------------------|--------------------|-----------------------|---------------------|
| 1 Original Window in Unit C | MM | NF | 6 | ~ 16 LF / ~ 2 SF |
| TOTAL | | | | ~ 16 LF / ~ 2 SF |

| Sample No. | Description and Location | Results (%) |
|---|---|---------------|
| 1758-07 | Sample of glazing taken from the window in the back porch in unit C | None Detected |
| *Note: All samples were collected in a statistically random manner representative of Homogeneous Area in accordance with 40 CFR 763.86. | | |

| Location | Recommendations |
|----------|-----------------|
| HA-G | Non asbestos |

Key: F = Friable NF = Non-friable SF = Square Feet LF = Linear Feet MF = Mudded Fittings
 SM = Surfacing Material TSI = Thermal Systems Insulation MM = Miscellaneous Material

Condition: 1 = Good 2 = Potential for Damage 3 = Potential for Significant Damage 4 = Damaged 5 = Damaged + Potential for Damage
 6 = Damaged + Potential for Significant Damage 7 = Significantly Damaged

ASBESTOS SURVEY DATA FORM

LOCATION: Residential Units

LAB: 1758

ADDRESS: 318 E. Michigan Avenue in Three Rivers, Michigan

DATE: 09/10/15

HA#: H

HA DESCRIPTION: Flat Roofing Material

| HA LOCATION | Type SM/TSI/MM | Friability F/NF | Physical Condition | Size SF/LF/MF |
|-----------------|-------------------|--------------------|-----------------------|------------------|
| Throughout Roof | MM | NF | 6 | ~ 600 SF |
| TOTAL | | | | ~ 600 SF |

| Sample No. | Description and Location | Results (%) |
|---|--|---------------|
| 1758-08 | Sample of roofing material taken from near the hatch on the roof | None Detected |
| *Note: All samples were collected in a statistically random manner representative of Homogeneous Area in accordance with 40 CFR 763.86. | | |

| Location | Recommendations |
|----------|-----------------|
| HA-H | Non asbestos |

Key: F = Friable NF = Non-friable SF = Square Feet LF = Linear Feet MF = Mudded Fittings
 SM = Surfacing Material TSI = Thermal Systems Insulation MM = Miscellaneous Material

Condition: 1 = Good 2 = Potential for Damage 3 = Potential for Significant Damage 4 = Damaged 5 = Damaged + Potential for Damage
 6 = Damaged + Potential for Significant Damage 7 = Significantly Damaged

Appendix Table of Contents

- A) Sample Results
- B) Chain of Custody
- C) Site Location Map
- D) ATCS Credentials

Appendix A

Sample Results



ANALYTICAL TESTING & CONSULTING SERVICES, INC.

*14625 Doster Road
Plainwell, Michigan 49080
Phone: 269-664-6474
FAX: 269-664-6406*

September 25, 2015

Alex Ebestein
City of Three Rivers
1015 S. Lincoln Avenue
Three Rivers, Michigan 49093

Dear Mr. Ebestein,

The bulk samples that were taken by Jon Fischer of ATCS on September 10th, 2015 from 318 E. Michigan Avenue in Three Rivers, Michigan have been analyzed as requested and the results are compiled in the following table.

| Lab # | Sample Description | Asbestos Identification | Non-Asbestos Fibrous Mat'l | Non-Fibrous Filler/Binder |
|--------------------|---|--------------------------------|------------------------------------|----------------------------------|
| 1758-01 | Green solid | None Detected | None Detected | Mixed Minerals |
| 1758-02 Layer 1 | White solid | None Detected | None Detected | Mixed Minerals |
| 1758-02 Layer 2 | Yellow adhesive | None Detected | Trace of Cellulose | Mixed Minerals Adhesive |
| 1758-03 | Tan solid | None Detected | None Detected | Mixed Minerals |
| 1758-04 | White solid | None Detected | None Detected | Mixed Minerals |
| 1758-05 Layer 1 | White solid with tan cover | None Detected | None Detected | Mixed Minerals |
| 1758-05 Layer 2 | Tan adhesive | None Detected | Trace of Cellulose | Mixed Minerals Adhesive |
| 1758-06 | White solid with white fibers | 60% Chrysotile | None Detected | Mixed Minerals |
| 1758-07 | White solid | None Detected | None Detected | Mixed Minerals |
| 1758-08 | Black fiber and filler with tan aggregate | None Detected | 20% Fibrous Glass <5% Cellulose | Mixed Minerals Organic Tar |

| | | | | |
|---------|--|---------------|---------------|-------------------------------|
| 1758-08 | Black fiber and filler with tan aggregate | None Detected | 40% Cellulose | Mixed Minerals Organic Tar |
| 1758-08 | Black fiber and filler | None Detected | 80% Cellulose | Mixed Minerals Organic Tar |

Percentage results are estimates only.


Test results related to items tested only.

Samples are held thirty (30) days.

**Client ID#*

ND – None Detected Less than 1%

Analysis performed using polarized light microscopy with dispersion staining according to U.S.E.P.A. procedures.



**Douglas A. Haase,
Director of Laboratory Services**

Appendix B

Chain of Custody

CHAIN OF CUSTODY RECORD

ANALYTICAL TESTING & CONSULTING SERVICES, INC.

14625 DOSTER ROAD

PLAINWELL, MI 49080

PH: 269-664-6474

FAX: 269-664-6406

| BILLED TO | | PROJECT INFORMATION | | | | ANALYSIS REQUIRED | | DISPOSAL |
|---|---------------------------------|---|----------|---|------------|-------------------|-----------|----------------------------------|
| Name: Analytical Testing & Consulting Services, Inc. | | Project Name: | | | | | | |
| Address: 14625 Doster Rd. | | Project Location: | | | | | | |
| City: Plainwell | | Project No.: | | | | | | |
| State: MI 49080 | | Project Contact: | | | | | | |
| Phone No: 269/ 664-6474 | | Phone/Fax No.: | | | | | | |
| Fax No.: 269/ 664-6406 | | Date Sampled: | | | | | | |
| Sampled by: Jon Biscan | | Samples Preserved: <input type="checkbox"/> Yes <input type="checkbox"/> No | | Received Cold: <input type="checkbox"/> Yes <input type="checkbox"/> No | | | | COMMENTS/ SOCIAL SECURITY# |
| Sample # | Description | Time On | Time Off | Total Time | Start Flow | Stop Flow | Avg. Flow | |
| 1958-01 | Garage | | | | | | | |
| 1958-02 | 12'x12' VINYL TILE STONE CORNER | | | | | | | |
| 1958-03 | 12'x12' VINYL TILE WOOD PATIO | | | | | | | |
| 1958-04 | Drywall w/ mud | | | | | | | |
| 1958-05 | 12'x12' VINYL TILE STONE PORCH | | | | | | | |
| 1958-06 | EXT SIDING | | | | | | | |
| 1958-07 | WINDOW GLAZING | | | | | | | |
| 1958-08 | ROOF MATERIAL | | | | | | | |
| <p>* Do wipe samples submitted meet ASTM E1792 requirements? Yes <input type="checkbox"/> No <input type="checkbox"/></p> | | | | | | | | |

Special Instructions:

Samples Relinquished by:

Date:

Time:

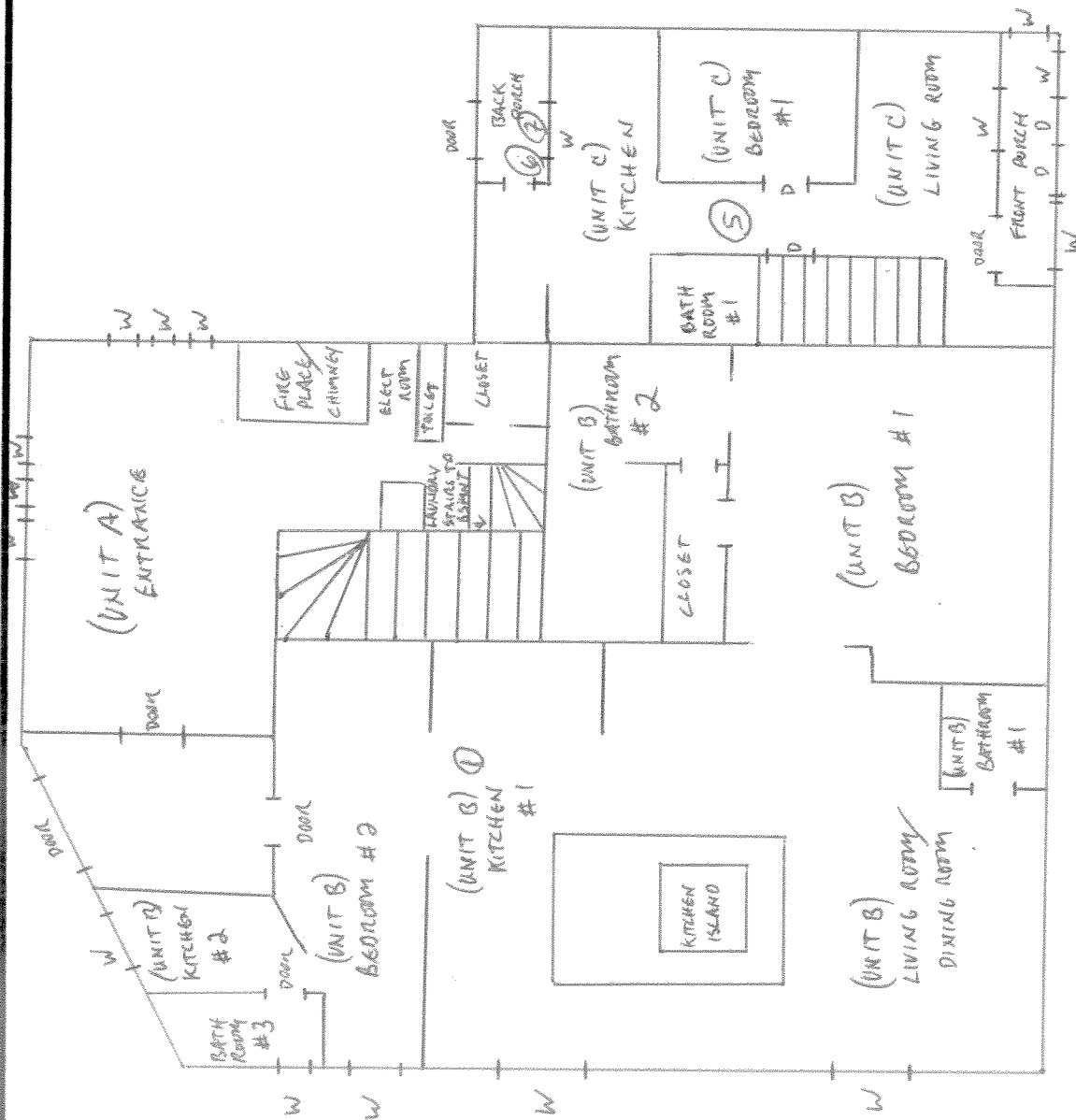
Accepted by:

Date:

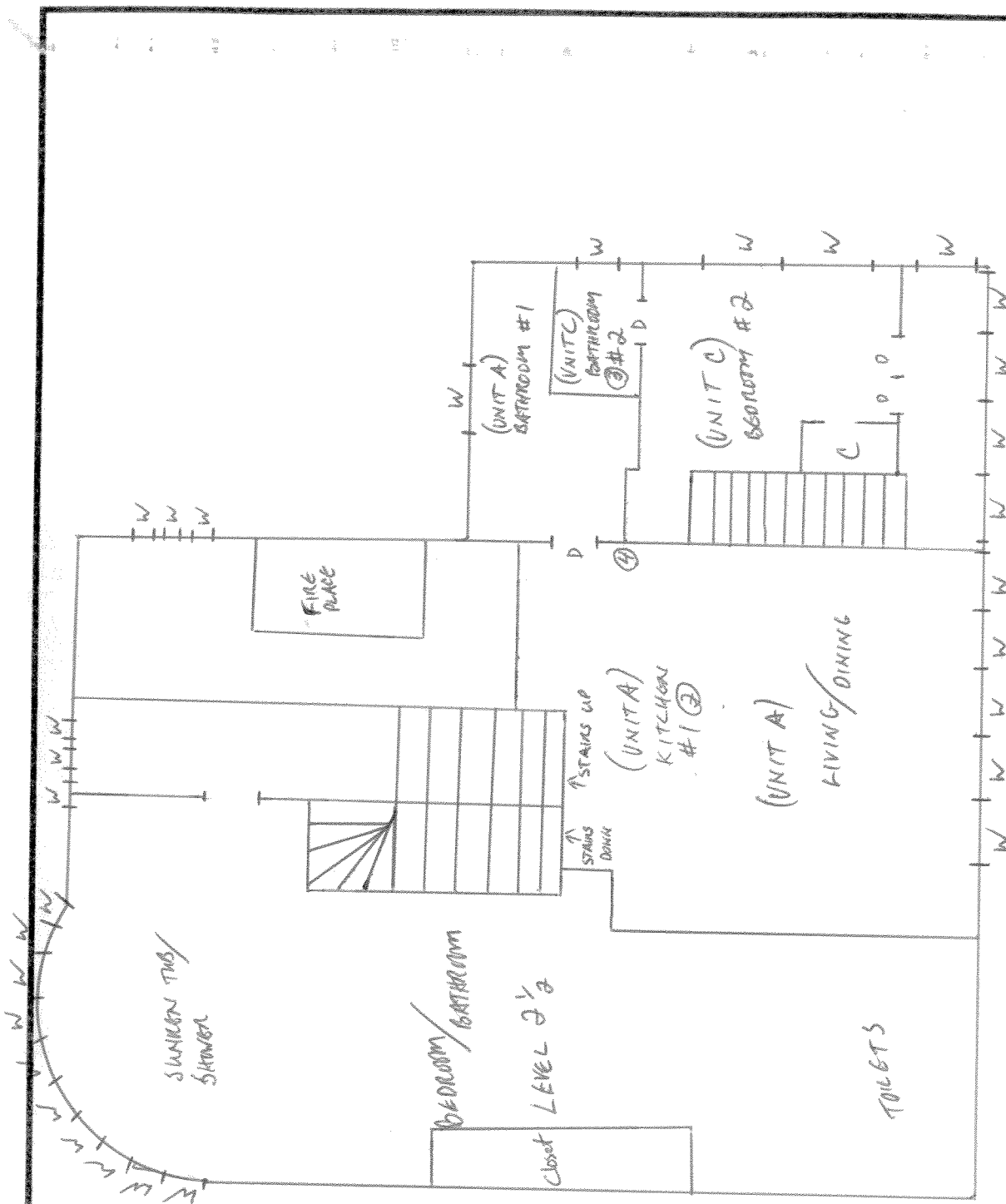
Time:

Appendix C

Site Location Map



| TOLERANCES EXCEPT AS NOTED | | REVISIONS | | | 1st Floor |
|-------------------------------|--|-------------|------|----|-------------------|
| | | NO | DATE | BY | |
| DECIMAL | | 1 | | | 318 E. MICHIGAN |
| ± | | 2 | | | |
| FRACTIONAL | | 3 | | | |
| ± | | 4 | | | |
| ANGULAR | | 5 | | | |
| ± | | | | | |
| | | DRAWN BY JF | | | SCALE N/A |
| | | CHECKED | | | DATE 9/10/15 |
| | | TRACED | | | APPROVED |
| | | | | | MATERIAL |
| | | | | | DRAWING NO. LAB # |
| | | | | | 1758 |

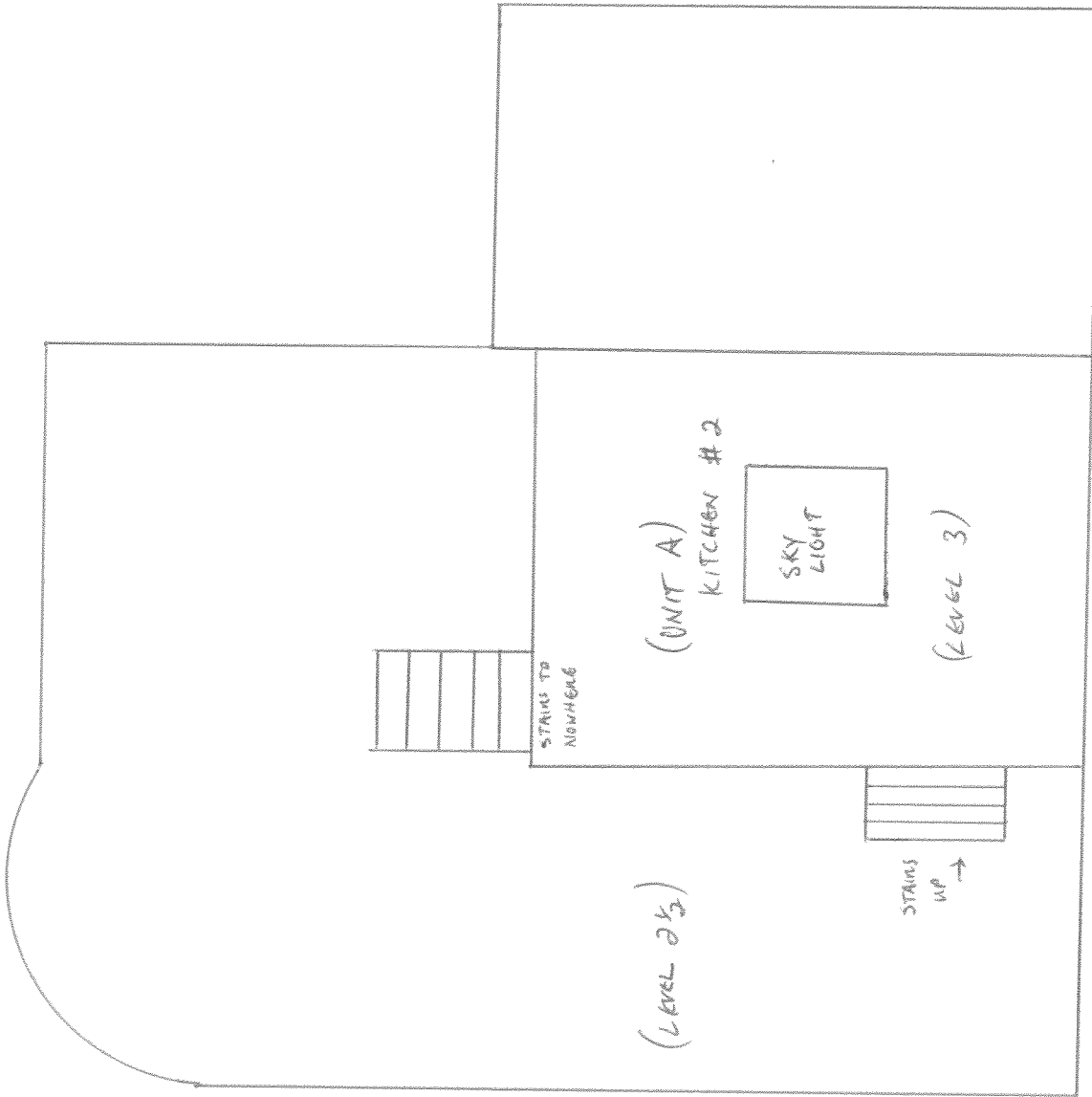


| TOLERANCES | | REVISIONS | |
|-----------------|--|-----------|------|
| EXCEPT AS NOTED | | NO | DATE |
| DECIMAL | | 1 | |
| FRACTIONAL | | 2 | |
| ANGULAR | | 3 | |
| | | 4 | |
| | | 5 | |

LEVELS 2 + 2 1/2

318 E. MICHIGAN AV THREE RIVERS

| | | | | | |
|----------|----|----------|---------|-----------|------|
| DRAWN BY | JE | SCALE | N/A | MATERIAL | |
| CHECKED | | DATE | 9/10/15 | DESIGNING | 248# |
| TRACED | | APPROVED | | | 1758 |



| TOLERANCES EXCEPT AS NOTED | | REVISIONS | | | 3RD FLOOR | |
|-------------------------------|--|-------------|------|--------------|---------------------------------|--|
| | | NO | DATE | BY | | |
| DECIMAL | | 1 | | | 318 E. MICHIGAN AV THREE RIVERS | |
| ± | | 2 | | | | |
| FRACTIONAL | | 3 | | | | |
| ± | | 4 | | | | |
| ANGULAR | | 5 | | | | |
| ± | | | | | | |
| | | DRAWN BY JF | | SCALE N/A | MATERIAL | |
| | | CHECKED | | DATE 9/10/15 | DRAWING NO - LAB # | |
| | | TRACED | | APPROVED | 1958 | |

Appendix D

ATCS Credentials

EPA AHERA/ Michigan Department of Licensing and Regulatory Affairs approved in compliance with the training requirements as mandated by TSCA TITLE II, 40 CFR 763, NESHAPS 40 CFR 61.145 (c)(8) and Michigan Public Act 440 of 1988.

Certificate of Award


This is to Certify that

Jon Fischer (XXX-XX-0875)

has been awarded this Certificate for the completion of the
**4 HOUR ASBESTOS INSPECTOR REFRESHER
TRAINING COURSE**

Certificate #: 15-348

**Date of Course: August 17th, 2015
Expiration Date: August 17th, 2016**



Course Instructor, Douglas A. Haase

**ANALYTICAL TESTING & CONSULTING SERVICES, INC.
14625 Doster Road in Plainwell, Michigan 49080
(269) 664-6474**